

汎利行

Friendly Properties Pty Ltd

Success the 'Friendly' way!

Real Estate Agents | Property Managers | Business Agents | Auctioneers

www.friendlyproperties.com.au

Princeton

70/304-308 Pitt Street SYDNEY NSW 2000

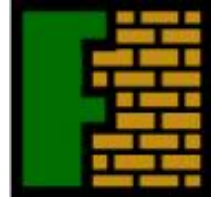


Price: \$1,690,000+



CONTACT DETAILS

Jugan Lau
Sales
0412 256 619



One of the biggest three bedroom apartment in City, your home is here

PROPERTY DETAILS

188SQm

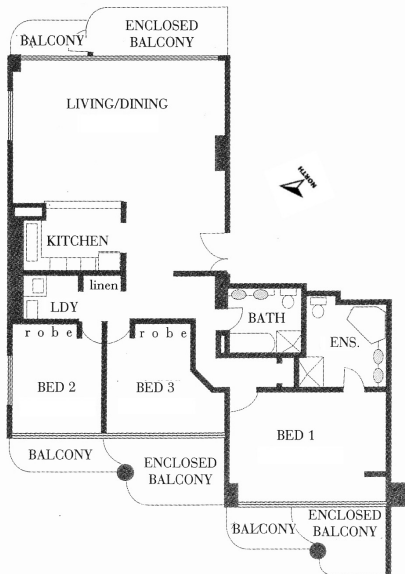
DESCRIPTION

- North East Aspect to maximize sunlight, far distance view to Sydney CBD as far as Sydney Harbour to the north and Hyde Park to the east.
- Corner Position of the building. Only three units per level.
- Boosting Apartment area of 176sqm, exceptional spacious layout of living area and master bedroom.
- Enclosed balcony in almost every bedroom and living room, can be used as a study or sky garden!
- Lock Up Garage for extra storage
- Resort style facilities for entertainment
- Centrally located in Pitt Street, walking distance to Town Hall, World Square, Hyde Park, etc.

FEATURES

OUTGOINGS

Strata Levies: Approx \$2995/quarter
Council Rates: Approx \$220/quarter
Water Rates: Approx \$160/quarter



All prices & details are subject to change without any notice. "The above information has been furnished to us by the vendor/developer. We do not accept any responsibility to any person for its accuracy and do no more than pass it on. All interested parties should make and rely upon their own inquiries in order to determine whether or not this information is in fact accurate."

Suite 1708, Level 17, 87-89 Liverpool Street Sydney NSW 2000 AUSTRALIA
Telephone: (61) (02) 9262 7666 | Facsimile: (61) (02) 9262 7633
Email: fppl.sales@bigpond.com